

BT910

6V AND 12V BATTERY TESTER WITH PRINTER AND COLOR TFT-LCD DISPLAY.



TFT-LCD Display
Improved user interface.
Excellent language support.

Companion PC Software
Great for test report storage,
review, and management.

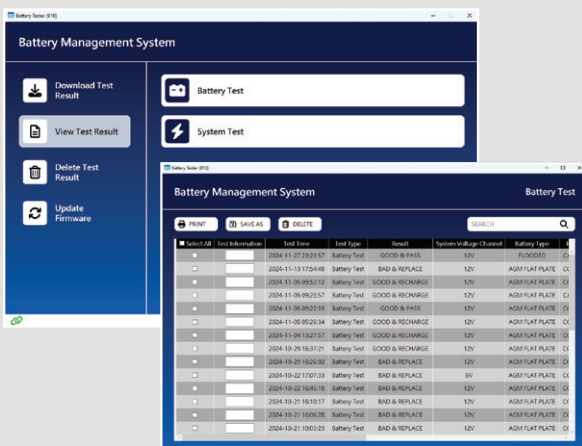
Firmware Update
Ready for new features and
future battery technologies.

6/12V Battery Test
6/12V Battery Test
Support most 6V
and 12V lead-acid batteries.

12/24V System Test
12/24V System Test
A comprehensive test of the
starting and charging system.

Built-in Printer
Print test result right on
the tester.

Integration with PC Software



Brand New User Interface

Buttons and icons are arranged in a clear and easy to understand manner.

Powerful Search Tool

Test data can be searched with keywords.

Multi-Language Support

Supports the same language options as the BT910.

Export Data for Research

Test data can be exported as .csv or .xlsx file for further research.

Specification

Application	6V and 12V Battery Test 12V Start-Stop Battery Test 12V and 24V Starting and Charging System Test
CCA Range	25 to 2,000 CCA/SAE
Supported Battery Type	Flooded, EFB, AGM Flat Plate, AGM Spiral, GEL
Supported Rating	CCA/SAE, EN, EN2, IEC, JIS, DIN, CA/MCA
Clamp-Cable Set	0.8m (approx. 1.9ft)
USB Interface	USB Type-C
PC Software Support	Yes (Test Result Review and Management, Firmware Update)
Firmware Update	Yes
Display	TFT-LCD
Printer	2" Easy-Load Thermal Printer (with DIY information)
Internal Battery	6 x AA Battery
Input Device	Hardware Buttons (Up/Down/Enter)
Dimension	(L x W x H, approximate) 249 x 103 x 78 mm (approx. 9.8 x 4 x 3 inches)
Certification	CE and UKCA
Operating Languages	English, French, German, Spanish, Italian, Portuguese, Dutch, Polish, Turkish, Chinese (Traditional & Simplified)

